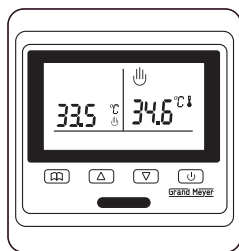


# Programmable Thermostat HW500 (HW500i, HW800)



## INSTALLATION MANUAL



Scan to find the manual in other languages.

**Programmable thermostat with anti-icing function is recommended for control of electric heating devices, including underfloor heating cable systems in living spaces.**

### TECHNICAL DATA

Supply voltage	230V AC $\pm 10\%$ 50 Hz
Power consumption	2W
Output relay SPST	16A
Ambient temperature	$-5^{\circ}/+50^{\circ}\text{C}$ during operation
On/off differential	$0.5^{\circ}/10^{\circ}$
Housing	IP 20
Material	Non-flammable PC

### FUNCTIONS



#### Manual Mode:

In this mode you can set maintain temperature manually.



#### Programmable Mode:

In this mode you can use adjustable program to maintain temperature automatically.



Wake-up



Leave (am)



Return (am)



Leave (pm)



Return (pm)



Sleep



Heating On



Key Lock



Frost protection

### THERMOSTAT SETUP

**A.** To set clock press «» & «» and hold for 5 seconds until the digit flashes. Use «» or «» to set the clock. Set the day of the week (1 - Monday, 2 - Tuesday, etc.). Press «» to confirm the entry.

**B.** Select which thermostat mode you want to use. Press «» to switch to manual mode («» appears in the display) or programming mode (symbol «» appears in the display).

#### C. Using manual mode

If the symbol «» is shown in the display, set desired temperature with «» or «». The desired temperature and time will be shown on left side of the display, the actual temperature shown on the right side of the display.

#### D. Using the programmable mode.

Hold down «» for 5 seconds to set up programmable mode. The display shows events according to the table below. The first five days of the week have 6 events. The weekends have two events (Wake-Up and Sleep). You can set up operating time and desired temperature for each event. Use «» or «» to set the time and / or temperature. Use the «» key to move to the next event. The desired temperature and time will be shown on left side of the display, the actual temperature shown on the right side of the display.

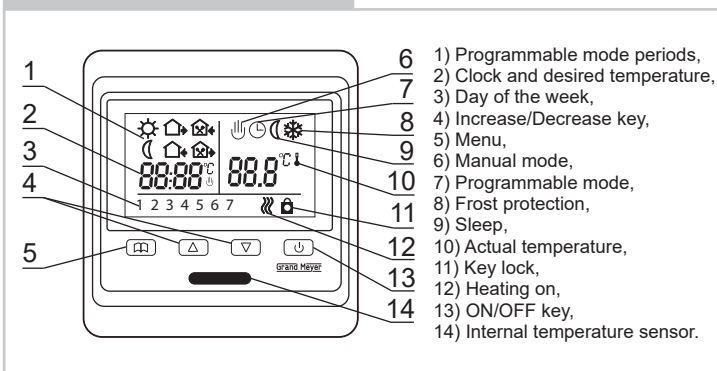
\* Recommend temperature for underfloor heating is  $25\text{-}27^{\circ}\text{C}$ .

### SETTING UP


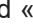
Hold «» for 5 seconds to start programming. Use «» or «» to set the time and / or temperature.




Buttons	Day of the week	Event (symbol)	Time	 	Temperature	 
 	Day 1 ... 5	1	06:00	Set time	20°C	Set temperature
		2	08:00		15°C	
		3	11:30		15°C	
		4	12:30		15°C	
		5	17:00		22°C	
		6	22:00		15°C	
	6, 7	1	08:00		22°C	
		2	23:00		15°C	

### BUTTONS AND SYMBOLS



**ADVANCED SETTING (qualified person preferred):**

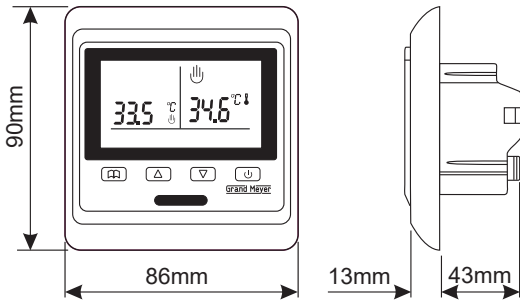
Press «» and «» at the same time to get in advanced setting menu.

Symbol	Settings	Use «  » or «  »
<i>TRDJ</i>	Temperature calibration	Set the temperature range
<i>2SEN</i>	Active temperature sensor	<i>in</i> : only internal build-in sensor <i>out</i> : only external sensor <i>RL</i> : both sensors
<i>3L.F</i>	External sensor upper temperature limit	From +5°C to +60°C (+35°C by default)
<i>4d.F</i>	Temperature hysteresis	From 0,5° to 10°
<i>5LFF</i>	Frost protection	<i>ON</i> : ON <i>OF</i> : OFF
<i>6PrG</i>	Weekly programming	5 working/2 weekend days 6 working/1 weekend days 7 working days
<i>7rLE</i>	Relay contacts	00: NO 01: NC 03: NC
<i>8dLY</i>	Not used on this model	
<i>9H.F</i>	Temperature upper limit	From +5°C to +95°C (+50°C by default)
<i>RFRC</i>	Reset to factory settings	Press «  » key for 5 seconds till showing ---

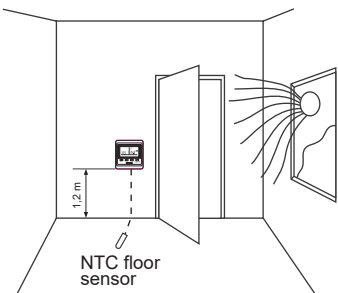
**KEY LOCK FUNCTION**

Press both buttons («» «») for 5 seconds to activate or deactivate KEY LOCK («») lock function switched on).

**DIMENSIONS**



**PLACEMENT OF THE THERMOSTAT**



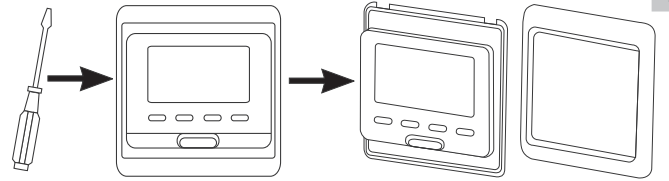
The thermostat must be installed on the wall with free air circulation. In addition, it must be positioned so that there is no other influence of a heat source (e.g. the sun), the doors or windows or the influence of the ambient temperature.

**RECYCLING OF OBSOLETE APPLIANCES**

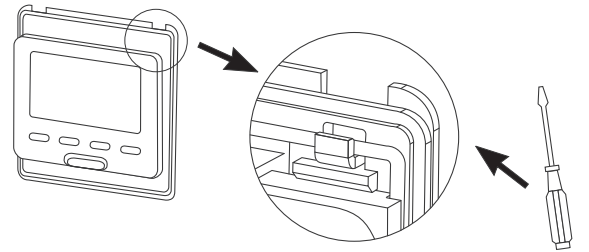


Appliances with this label must not be disposed off with the general waste. They must be collected separately and disposed off according to local regulations.

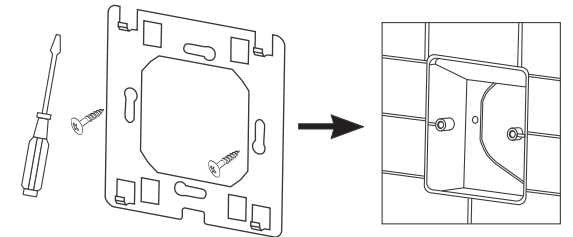
**INSTALLATION**



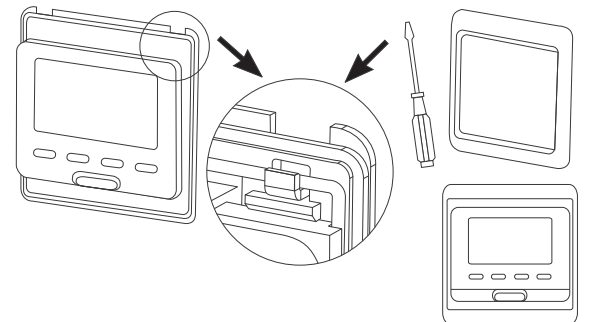
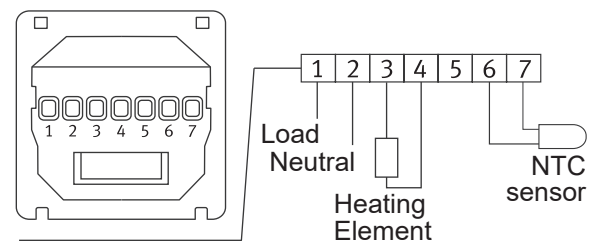
Remove the outer frame of the thermostat using a screwdriver.



Use a screwdriver to free the metal plate from the thermostat.



Use a screwdriver to fix the metal plate in the mounting box.



Attach the thermostat to the metal plate by securing it with a metal clip and an outer frame.

**WARNING – Important Safety Instructions:** Disconnect the power supply before carrying out any installation or maintenance work on this unit and associated components. This unit and associated components should only be installed by a competent person (i.e. a qualified electrician). Electrical installation must be in accordance with appropriate statutory regulations.