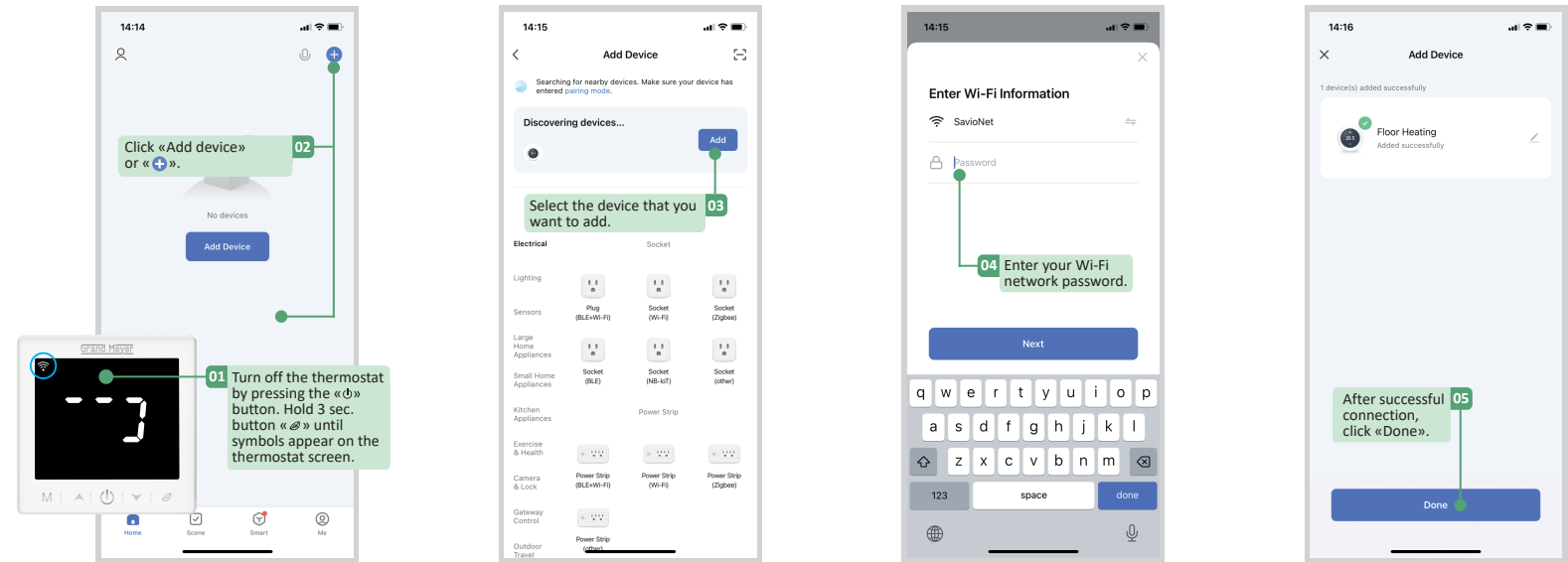


User Guide for Connecting to the Smart Life Application



2 Connection by Bluetooth. Turn on Bluetooth and location sharing on your smartphone.



1 Login and registration.

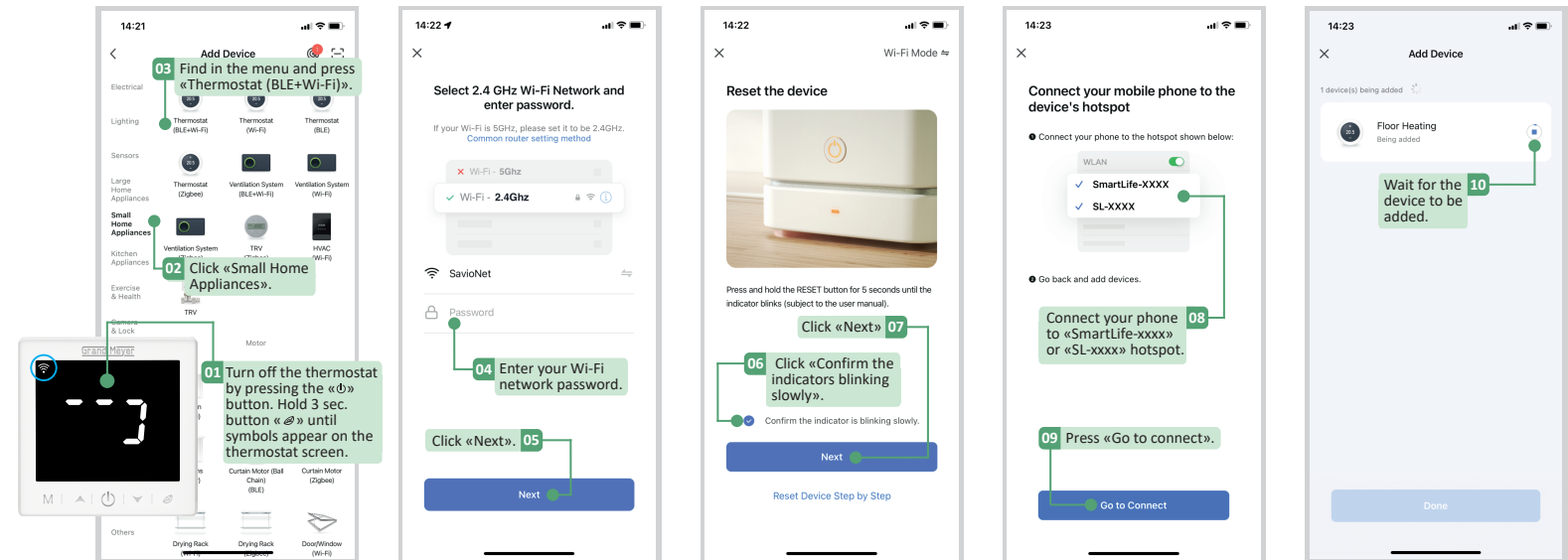


1 Scan the QR code or download the "Smart Life" app.

2 Create your account, register and login to the app.

* The thermostat and mobile device must be connected to the same 802.11 b/g/n (2.4 GHz) Wi-Fi network. The SSID of the Wi-Fi network is not hidden.

3 Connection in AP mode.



4 Device sharing.

